

ground floor plan

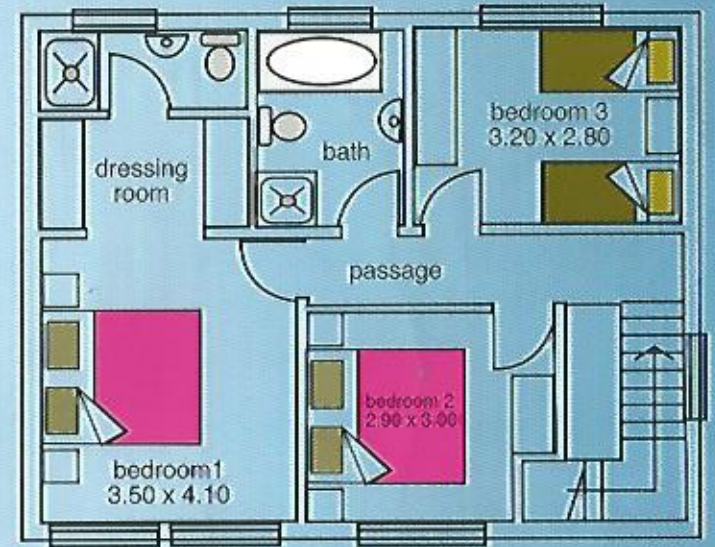
Villa type 5
"Alala"

Floor Area: 151 sqm

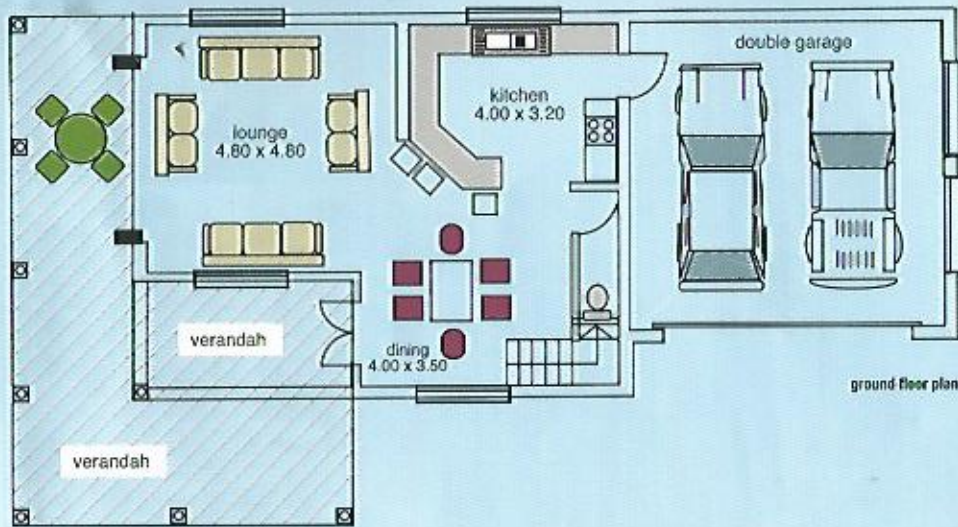


Villa type 2 "Albizia"

Floor Area: 203sqm



upper floor plan

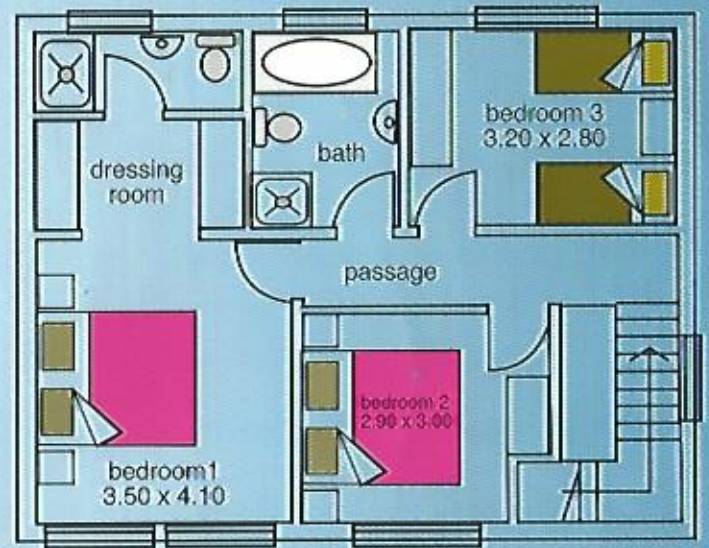


ground floor plan

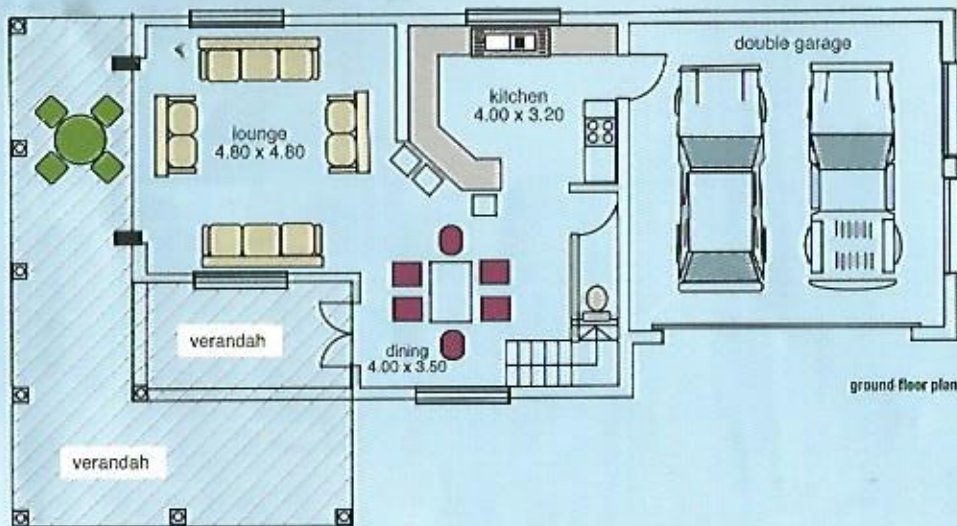


Villa type 2 "Albizia"

Floor Area: 203sqm



upper floor plan

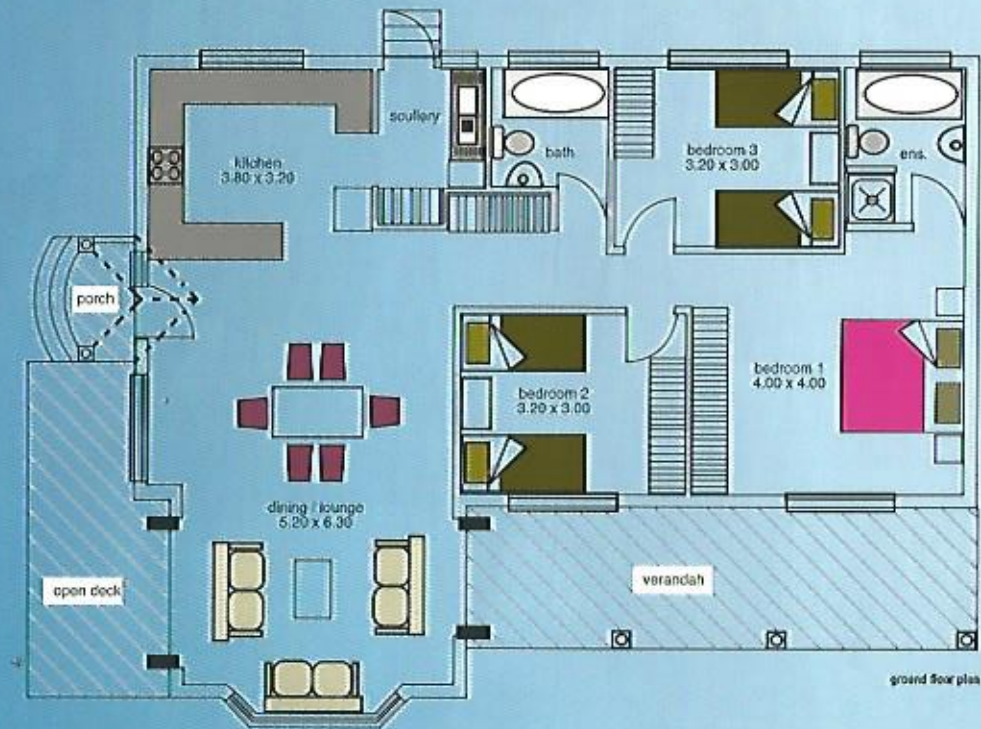


ground floor plan



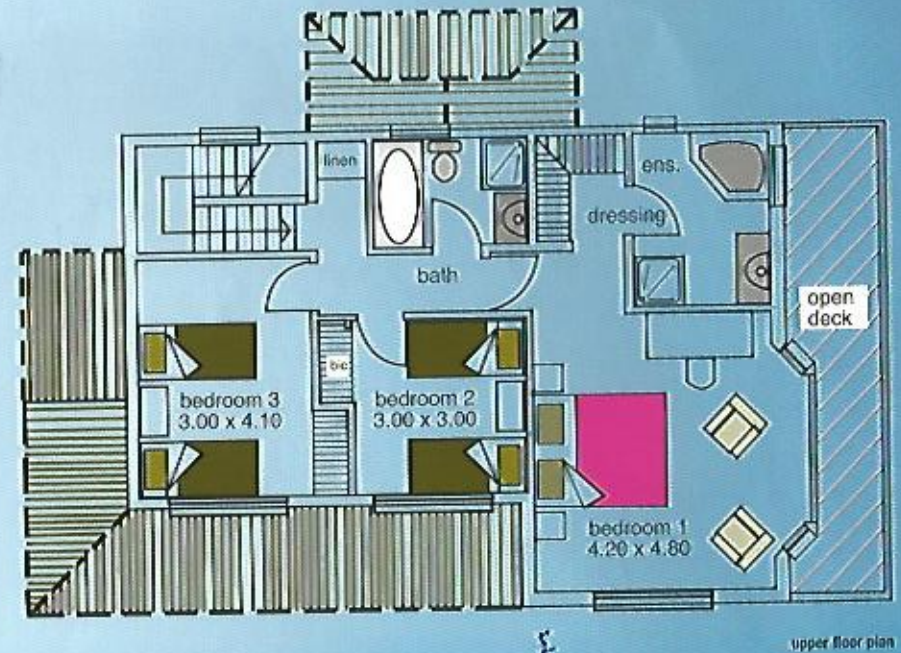
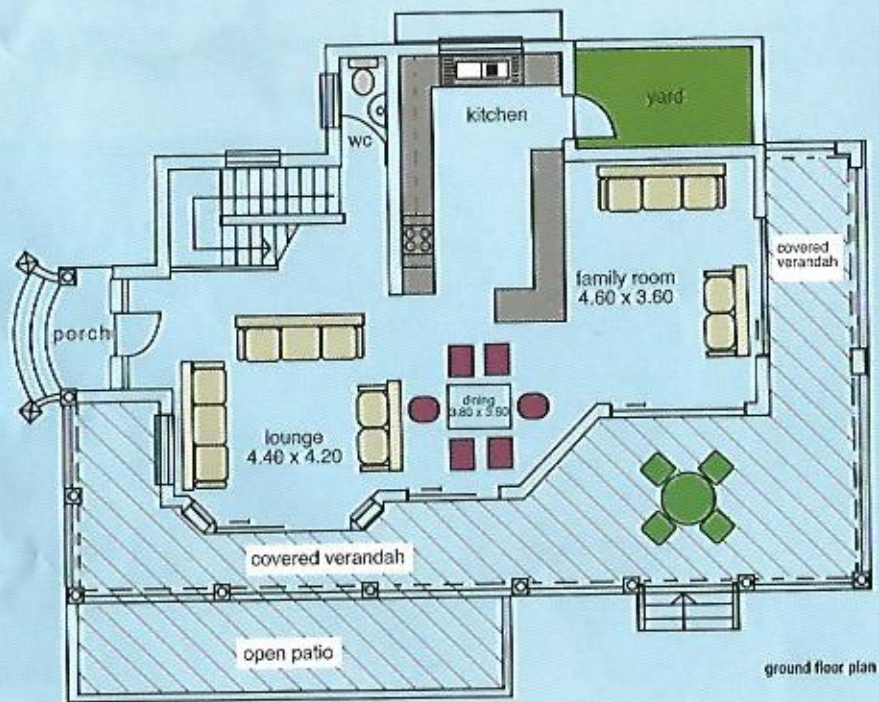
Villa type 3 "Umdoni"

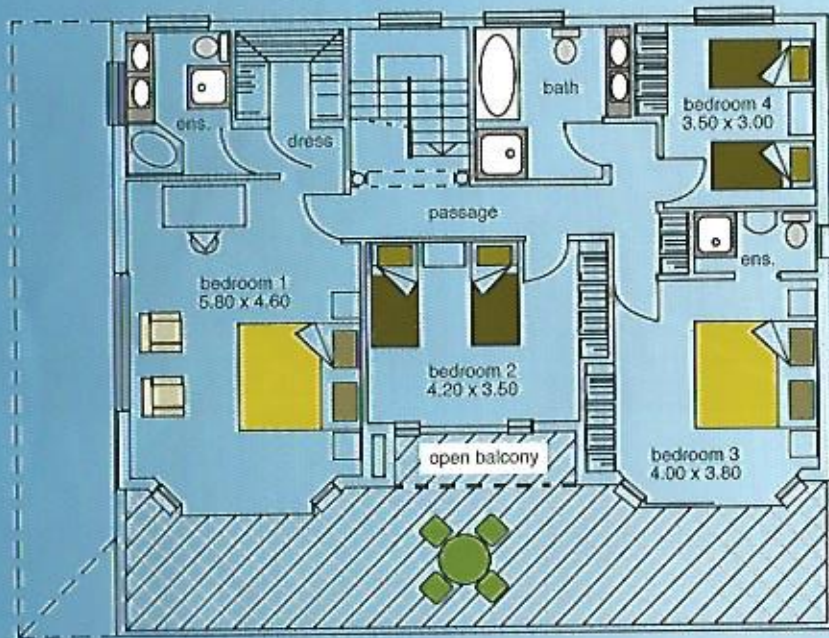
Floor Area: 209sqm



Villa type 4 "Milkwood"

Floor Area: 275sqm

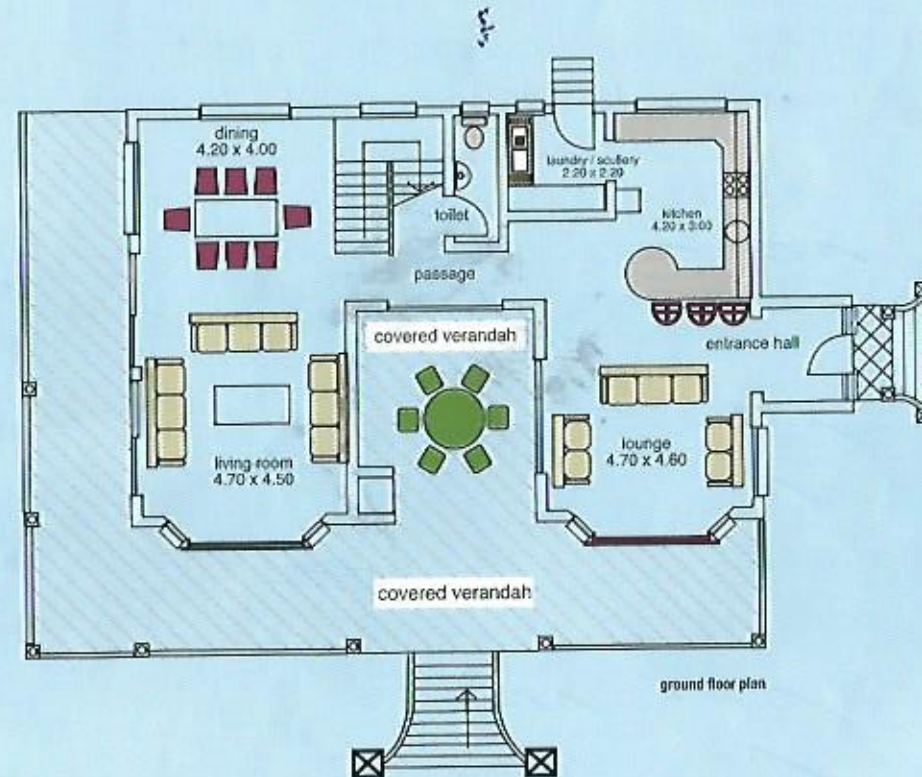




upper floor plan

Villa type 1 "Mohogany"

Floor Area: 489sqm



ground floor plan

Features

Each villa comprises the following:

- * Wrap around balconies
- * Surrounded by pristine coastal forests
- * Stunning sea views
- * Between 2 and 4 bedrooms, 2 to 3 bathrooms with a range of finishes
- * Air-conditioning (optional)
- * Double / single garage attached to each villa, with automated garage door
- * Own exclusive use area
- * Private swimming pool (optional)
- * Low maintenance face-brick

